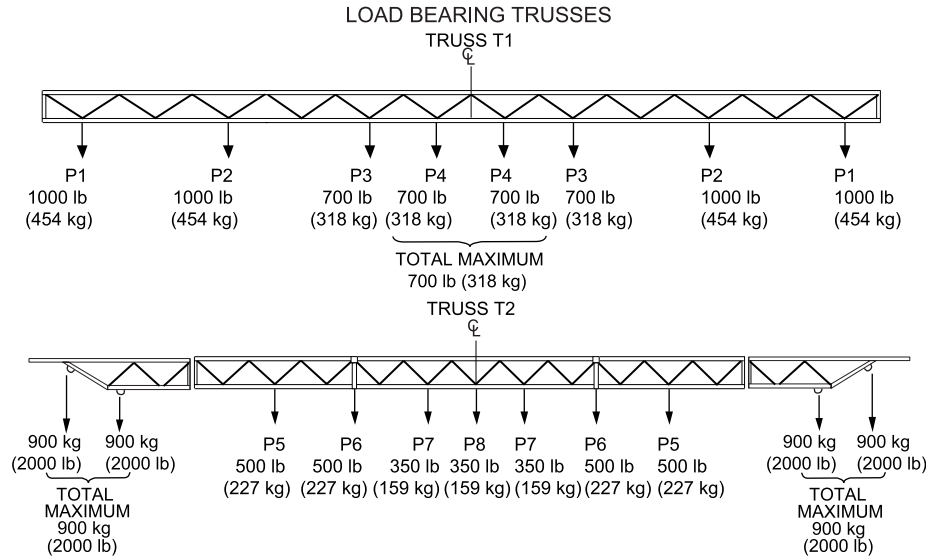


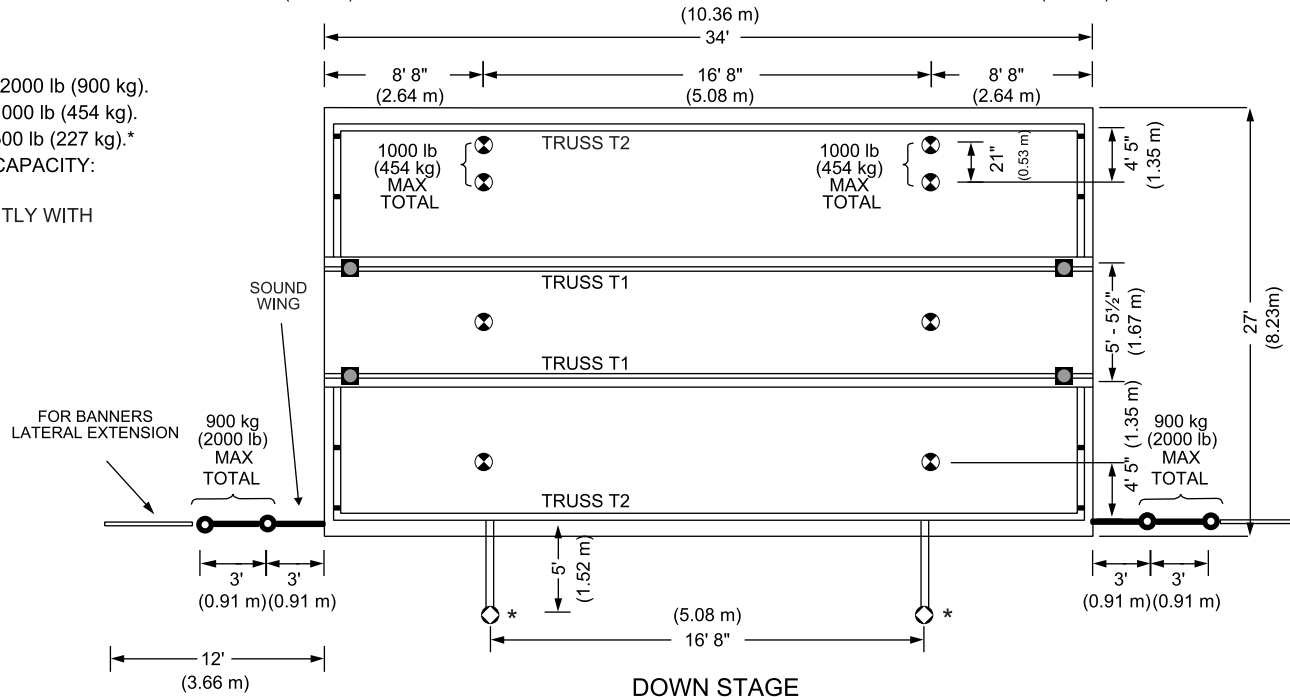
S L 250 Mobile Stage/Option 2000 lb. (900 kg.)



RIGGING PATTERNS

T1: USE P1 or P2 or P3 or P4
 T2: USE P5 or P6 or P7 or P8

- RIGGING POINT: Max. cap., 2000 lb (900 kg).
- ⊗ RIGGING POINT: Max. cap, 1000 lb (454 kg).
- ◇ RIGGING POINT: Max. cap, 500 lb (227 kg).*
- MAXIMUM LOAD BEARING CAPACITY:
12 000 lb (5455kg)
- * DO NOT RIG CONCURRENTLY WITH
LOADS ON TRUSS T2



RIGGING PLAN

Stage specifications subject to change without notice
 Figures are within inch or cm to actual size

©1999 – All rights reserved Stageline Mobile Stage inc®. Any and all forms of adaptation or reproduction of this document including plans and drawings found herein, in whole or in part, is strictly forbidden without the written authorisation of Stageline Mobile Stage inc®.