

Maximum Load Bearing Capacity: 7247 kg (16000 lbs)

- ⊗ Rigging point maximum capacity: 454 kg (1000 lbs)
- Rigging point maximum capacity: 227 kg (500 lbs) *
- Rigging point maximum capacity: 908 kg (2000 lbs)
- ⊗ Rigging point maximum capacity: 1360 kg (3000 lbs)
 when rigged concurrently with P12 or 1814 kg (4000 lbs) by itself

Rigging Patterns and Restrictions

T1: USE P1 or P2 or P3 or P4 or P5

T2: USE P6 or P7 or P8 or P9

Sound Wing

Use P10 or P11**

Use P10 and P12** or P11 and P12**

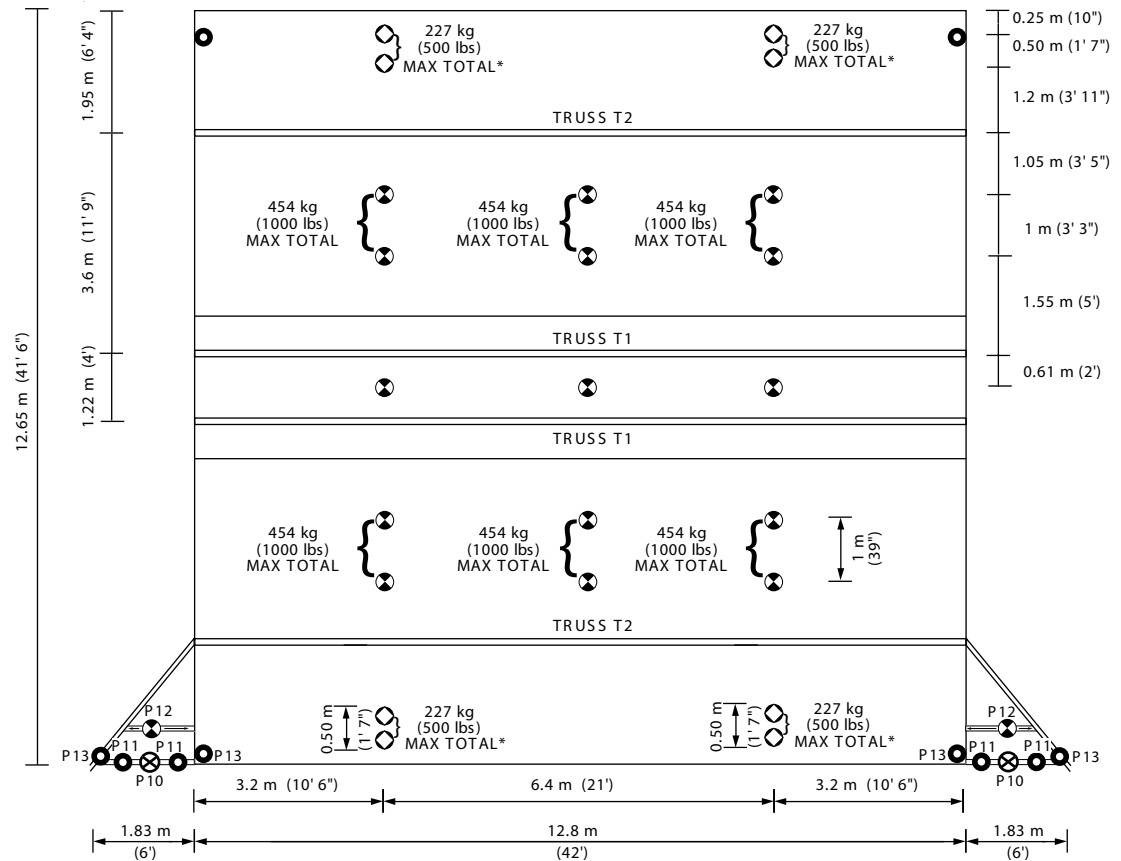
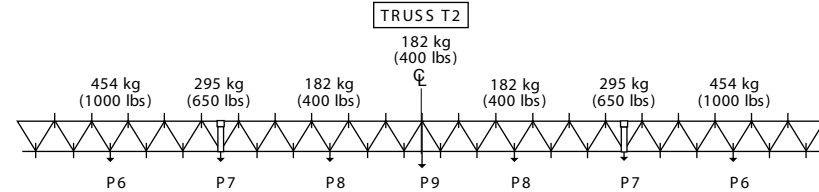
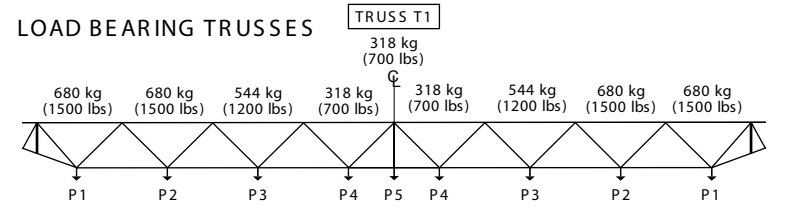
Note:

When banner rigging bar is installed, the total of P10 to P13 must not exceed 1360 kg (3000 lbs).

Never use P13 concurrently with P10 to P12

* Do not rig concurrently with loads on T2 or when wind walls are installed.

** Never exceed 1360 kg (3000 lbs) in total.



Bi-directional Rigging System

DOWNSTAGE